

Information Retrieved from the Corporate Property Information System. This document is available in large print and can be requested from Asset Strategy. Tel: (01482) 393951

DO NOT USE G.I.S. MAPS OR PLANS FOR DESIGN PURPOSES, OR SCALE DIMENSIONS FROM THIS DRAWING.

This map is reproduced from Ordnance Survey material with the permission of Ordnance Survey on behalf of Her Majesty's Stationery Office Crown Copyright 2020. Unauthorised reproduction infringes Crown copyright and may lead to prosecution or civil proceedings. © Crown Copyright and database right 2020. Ordnance Survey 100023383. East Riding of Yorkshire Council.

Copyright is owned by East Riding of Yorkshire Council, who provides this map-based data for information purposes only for use internally by East Riding of Yorkshire Council. Use of this data is not permitted without the prior written consent of the Council through the Head of Asset Strategy. Whilst we try to ensure that it is up to date and accurate, we cannot guarantee its accuracy or completeness. Nor can we be held responsible for the misuse or misinterpretation of any information. We accept no liability for any loss, damage or inconvenience caused as a result of reliance upon or use of this data.

Legend

- Block A
- Block B
- Block C
- Block D
- Energy Farm
- Block F
- The Gables
- Block H
- Block J
- Block K
- Block M
- Shed
- Shed
- Shed
- Plant Room
- Block X
- Block D
- Store
- Shed
- Shed
- Shed
- Shed
- Fuel Tank Store

Date	Surveyor	Revision
15.05.2008	C E Armitage	
18.05.2009	R Worfold	
25.02.2010	A Durm	
14.06.2011	C E Armitage	
01.12.2012	R Worfold	
01.07.2014	A Durm	
23.03.2015	C E Armitage	
06.02.2018	P Marston	

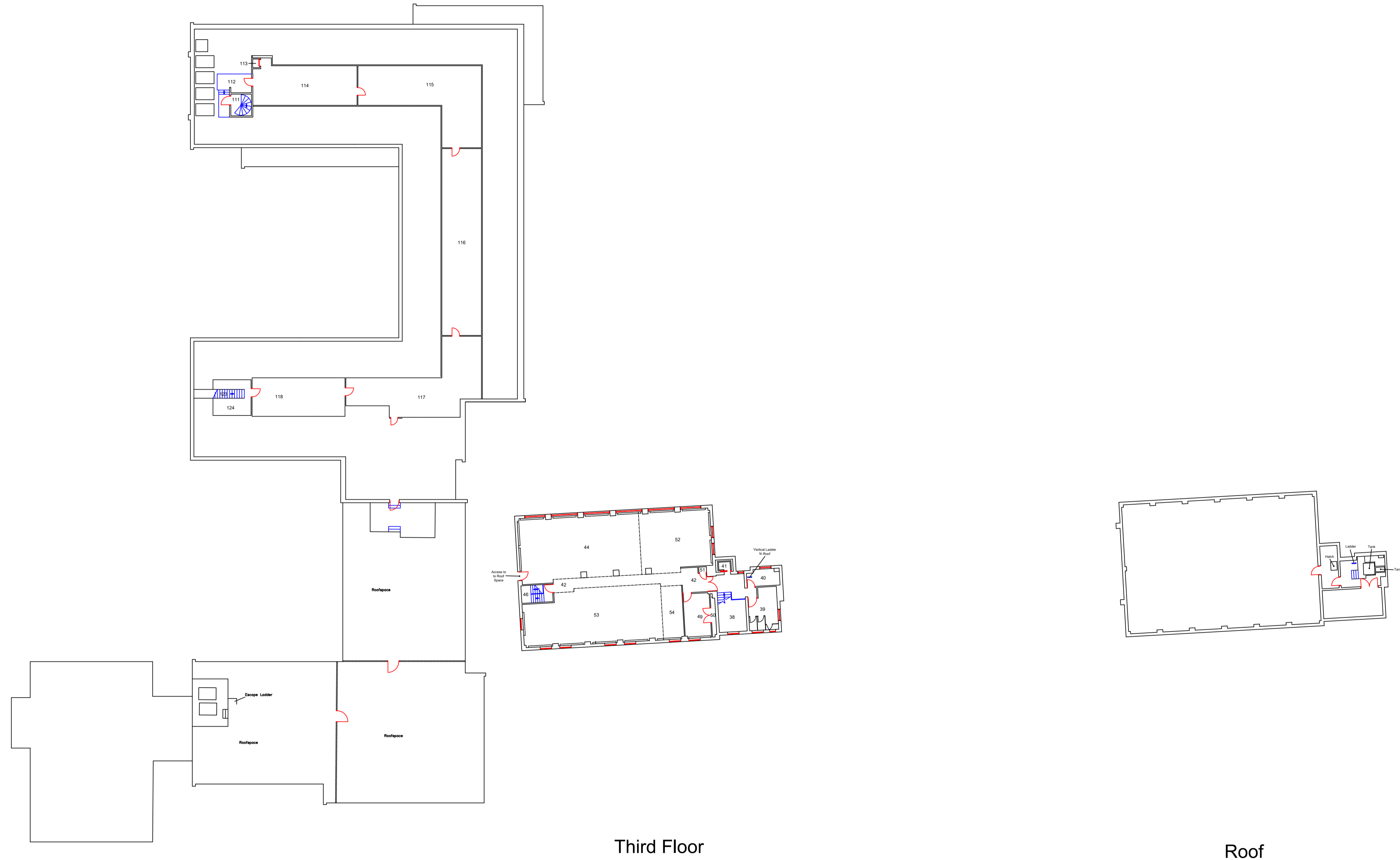
EAST RIDING
OF YORKSHIRE COUNCIL
HEAD OF ASSET STRATEGY
COUNTY HALL, BEVERLEY, EAST YORKSHIRE, HU17 9BA
Tel No: (01482) 393951
www.eastriding.gov.uk

Drawing Title
**Third Floor & Roof
All Blocks**

Drawing Number
Plan 5 of 5

Property
**County Hall
Beverley**

Scale @A1 Property Code
1:250 03463946



Third Floor

Roof